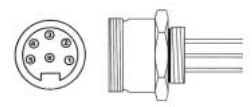
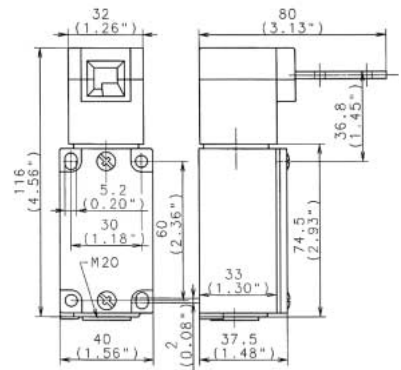


SPECIFICATIONS	KEY FEATURES	2 POLE
<p>NEMA 4, 12</p> <p>3 Pole</p> <p>10⁶ Mechanical Operations</p> <p>10 Amp 400V AC, UL 300V AC, CSA</p> <p>-22° F + 176° F min/max temp.</p> <p>5.6 lbs. Door Holding Force</p> <p>Cable Entry Thread M20 x 1.5 + 1/2" NPT</p> <p>UL, CSA, CE, BG, IEC 947-5-1</p> <p>BG Safety Agency Approved</p>	<ul style="list-style-type: none"> • Screw Terminals • Quick Connect Option • Painted Steel + Aluminum • Positive Opening N.C. contact → • Tamper Resistant • Steel "RR" flexible key, 6" min. Closing Radius 	<p>Metal - Rugged</p> <p>1.6"</p> <p>4.6"</p> <p>ENM Series</p> <p>Actuator keys sold separately. See page 10.</p>

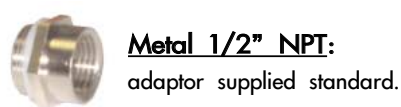
<p>Part #</p> <p>List Price</p> <p>Contact layout → (with key inserted)</p> <p>Slow-Action</p>	<p>ENM2-UV15Z VTW</p> <p>\$168</p>
--	--

Technical Specifications

- Contacts:**
Sliver - Nickel alloy
- Short Circuit Protection:**
6A slow blow, 10A fast blow
- Max Wire Size:**
Standard or Solid
20 AWG (0.5mm²) to
16 AWG (1.5mm²)
- Max switching distance per second:** 5 ft.
- Max switching operations per minute:** 50



Quick Connect Option:
See page 25.
For Plug and Socket options.



Metal 1/2" NPT:
adaptor supplied standard.

Part #	K-Flat	RR-Flex
List \$	\$18	\$70
Min Closing Radius	16"	6"

Actuator keys sold separately.
See page 10 for drawings.



Cord Grip Cable Gland Option:
Add "GR" to part # to replace the standard M20 to 1/2" NPT Adaptor. For 5mm to 13mm cable diameter Plastic.
Example: ENMZ-UIZ VTW-GR
(no extra charge)