

| SPECIFICATIONS | KEY FEATURES | SPECIAL VERSIONS |
|---|---|---|
| <p>NEMA 4, 12, UL, CSA, CE</p> <p>10 Amp → 16 Amp</p> <p>250V AC → 500V AC</p> <p>2 Pole</p> <p>-22° F + 176° F min/max temp.</p> <p>3 to 10 million mechanical operations</p> | <ul style="list-style-type: none"> • Heavy Duty • Fiberglass reinforced plastic or metal • Nylon or steel actuators • Snap or slow action contacts • Most versions Positive break N.C. contacts ➔ | <p>ENM2-U1Z-AHZ * \$112 List Price</p> |

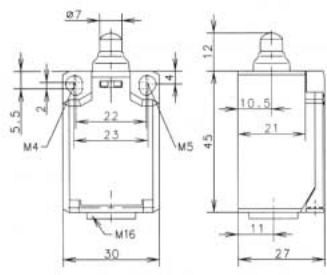
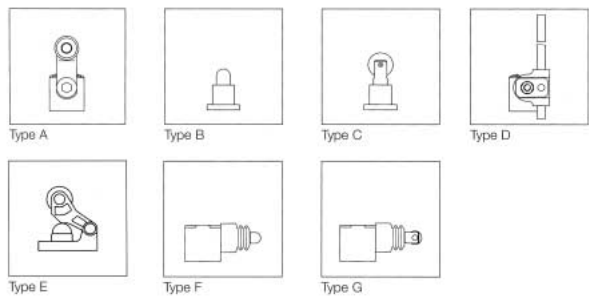
Ten Series of Switches

| Switch body | Dimensions | Description |
|-------------|-------------|-------------------|
| Compact | 1" x 2" | miniature |
| Standard | 30mm x 60mm | mounting holes |
| Full size | 2" x 3" | two cable entries |

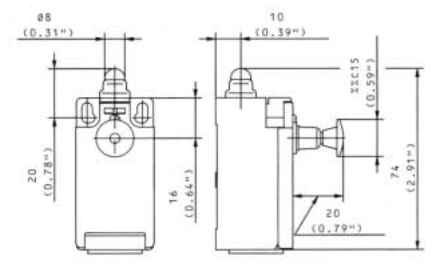
* Limit switches typically only have the N.C. contact positive break ➔. The ENM2-AH2 also has the N.O. contact positive break from its closed position!

Seven Additional Series of Switches

Common Actuators Available in Nylon or Metal



"Mini" Ti2 Series 1" x 2"
Tiz-U1ZW
\$34 List

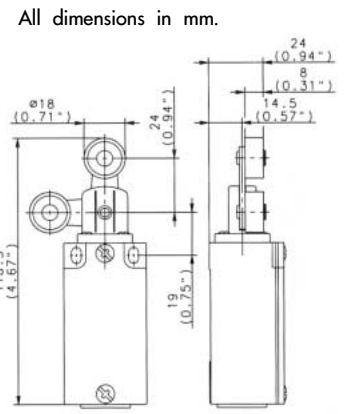


#188-U1ZW Rast
Maintained Reset on
plunger limit switch
\$44 List

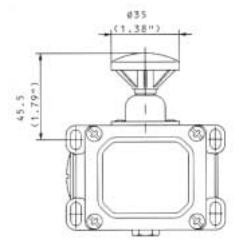
Unique Actuators



#GC-U1AF "Cats Whisker"
#GC-U1FF "Wobble Stick"



#GC-SU1DR
Double Roller



#D-U1PW
Mushroom Button
\$98 List

All dimensions in mm.

① Request Bernsteins 240 page switch catalog for additional specifications and ordering data.