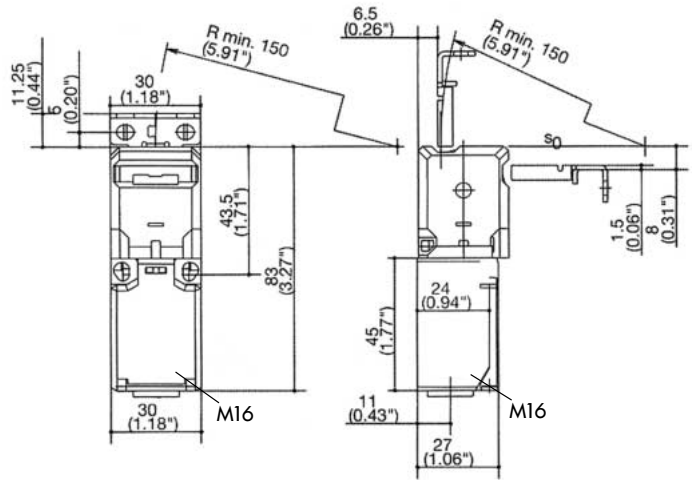


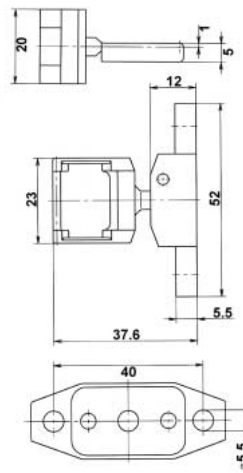
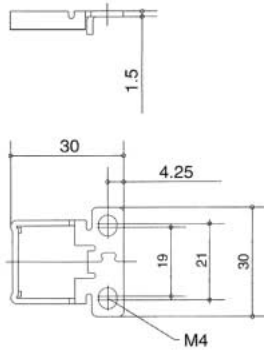
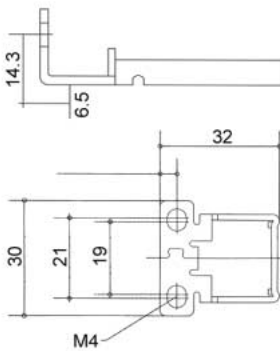
**EIGHT KEY ENTRY LOCATIONS**

All dimensions in mm (in).



M16 to 1/2" NPT  
plastic adaptor supplied on standard models.

All dimensions in mm.



## Technical Specifications

### Contacts:

Sliver - Nickel alloy

### Short Circuit Protection:

6A slow blow, 10A fast blow

### Max Wire Size:

Standard or Solid  
From 20 AWG (0.5mm<sup>2</sup>) to:  
16 AWG (1.5mm<sup>2</sup>)

Max switching distance  
per second: 5 ft.

Max switching operations  
per minute: 30

Part #	M-3 Key	M-2 Key	MRU-Key
List \$	\$6	\$6	\$22
Min Closing Radius	6"	6"	2"



- Stainless steel



- Stainless steel



- Flexible
- Adjustable horizontally & vertically
- Stainless steel
- Spring loaded to accommodate overtravel, vibration