
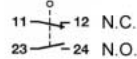


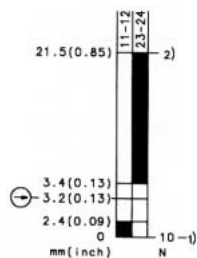
SPECIFICATIONS	KEY FEATURES	2 + 3 POLE
<p>NEMA 4X, 12</p> <p>2, 3 Pole, 500V AC</p> <p>10° Mechanical Operations</p> <p>10 Amp 250V 2 pole, 400V 3 pole, UL</p> <p>10 Amp (6A 3 pole) 300V - CSA</p> <p>-22° F + 176° F min/max temp.</p> <p>Up to 22 lbs. Holding Force</p> <p>10mA min. current</p> <p>Key Entry Rotates 180°</p> <p>Cable Entry Thread M20x1.5+1/2" NPT</p> <p>UL, CSA, CE, BG, IEC 947-5-1</p> <p>BG Safety Agency Approved</p>	<ul style="list-style-type: none"> • Four key entry locations★ • Screw Terminals • Quick Connect Option • Three Cable Entry Locations (2 entries on 3 pole) • Glass Reinforced Thermoplastic • Positive Opening N.C. contact → • Tamper Resistant • Stainless Steel Keys • 2" Min. Closing Radius "MRU" key • "M" key, 6" Min. Closing Radius <p>★ Switch head rotates, permits <u>four</u> different key entry locations.</p>	<div style="text-align: center;">  <p>2"</p> <p>3.54"</p> <p>SK Series</p> </div> <p>Actuator keys sold separately. See page 8.</p>

Part #	SK-U1Z F30 M	SK-UV16Z M	SK-UV15Z F30 M
List Price	\$58	\$64	\$64
Holding Force:	7 lbs.	2 lbs.	7 lbs.

Contact layout →
(with key inserted)



Slow-Action

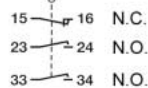


Contact travel
mm (inch)
Tol. ± 0.25 mm

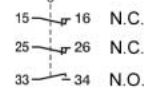
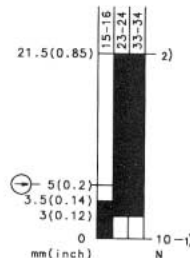


Actuator force N
Tol. ± 10%

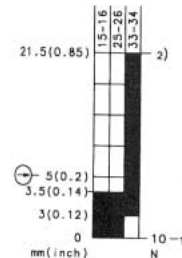
1) actuator in
2) actuator out



Slow-Action



Slow-Action



For increased holding force from 7 lbs. to 22 lbs. on 3 pole: SK-UV15Z F30 M change part# to: SK-UV15Z F100 M

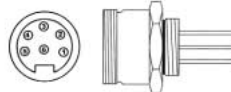
For spring ejection force 2.2 lbs. (no holding force) on 2 pole: SK-U1Z F30 M change part# to: SK-U1Z FE M



Metal 1/2" NPT Option:
Non-Metal 1/2" NPT adaptor supplied standard. For Metal Adaptor, add "ME" to part #.
Example: SK-UV15ZF30M-ME



Cord Grip Cable Gland Option:
Add "GR" to part # to replace the standard M20 to 1/2" NPT Adaptor. For 5mm to 13mm cable diameter
Example: SK-UV15ZF30M-GR (no extra charge)



Quick Connect Option:
See page 25.
For Plug and Socket options.

Red Pilot Light - AC/DC:

Part #	Voltage	List
M-20 pilot	24 - 230V	\$56
SK-pilot 120V	120V	\$42
SK-pilot 24V	24V	\$42

Technical Specifications

Contacts:

Sliver - Nickel alloy

Short Circuit Protection:

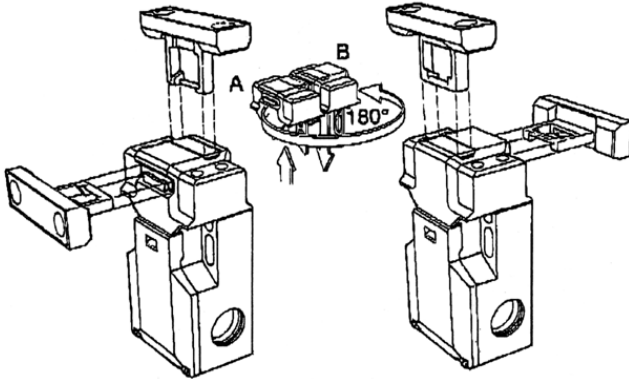
6A slow blow, 10A fast blow

Wire Size:

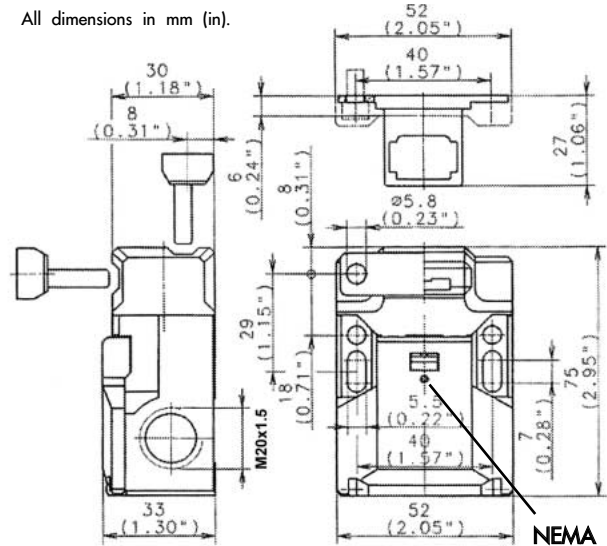
Standard or Solid
From 20 AWG (0.5mm²) to:
16 AWG (1.5mm²) 2 Pole
(18 AWG -1.0mm²) 3 Pole

Max switching operations per minute: 30

All dimensions in mm (in).



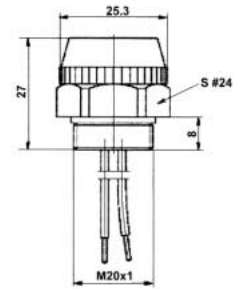
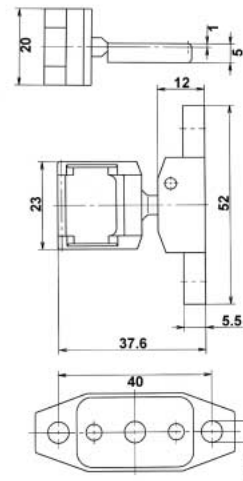
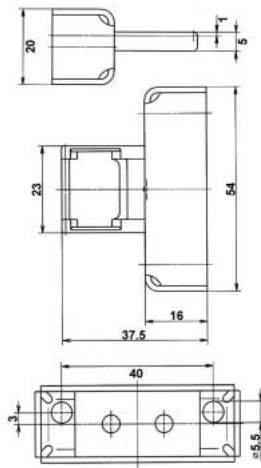
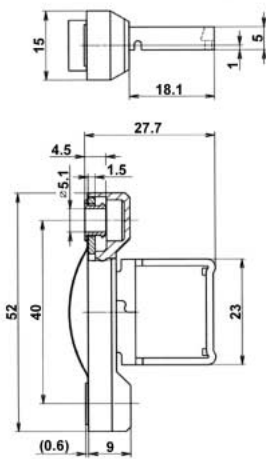
FOUR KEY ENTRY LOCATIONS



SK - 2, 3 Pole

NEMA 4X
with contact cover
screw attached
(included with switch)

All dimensions in mm.



Red pilot light (for ON or OFF)
Attach in cable entry opening.

<u>Volt</u>	<u>Part#</u>	<u>List</u>
24-230V	M-20 PILOT	\$56

Part #	M4-Key	F-Key	MRU-Key	SK-Handle
List \$	\$8	\$16	\$22	\$54
Min Closing Radius	6"	6"	2"	



- Stainless steel + polyamide
- M - magnet \$29
- Key with door holding magnet 11 → 23lbs.



- Spring loaded to accommodate overtravel and vibration
- Stainless steel + polyamide



- Flexible
- Adjustable horizontally & vertically
- Stainless steel
- Spring loaded to accommodate overtravel, vibration



- MANUAL KEY HANDLE
- For loose doors, gates, fences
- Includes chain

Maximum actuator speed 1 yard per second.